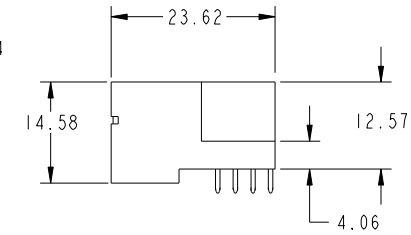
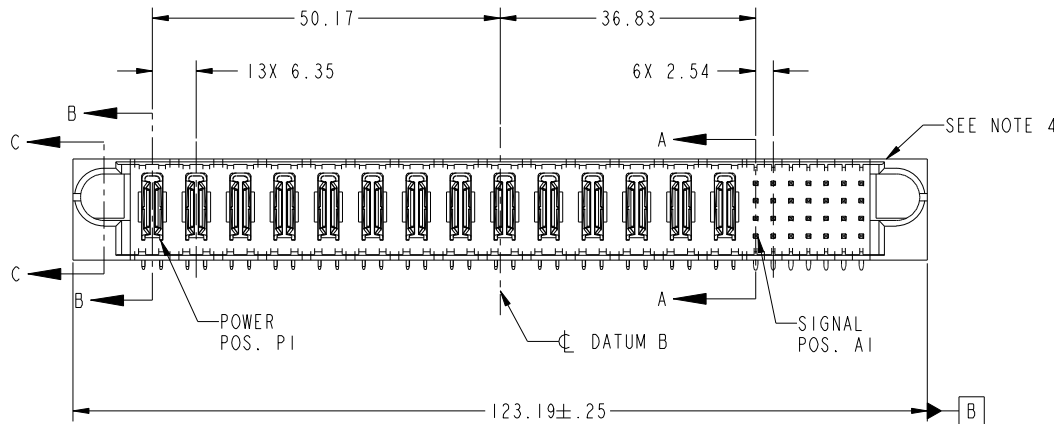


Tous droits strictement réservés. Reproduction ou communication a des tiers interdite sous quelque forme que ce soit sans autorisation écrite du propriétaire. Propriete de c FCI. Droits de reproduction FCI.



All rights strictly reserved. Reproduction or issue to third parties in any form whatever is not permitted without written authority from the proprietor. Property of FCI. Copyright FCI.

PRODUCT NO.	ROWS	POWER														SIGNAL																																							
		E1	P1	P2	P3	P4	P5	P6	P7	P8	P9	P10	P11	P12	P13	P14	1	2	3	4	5	6	7	E2																															
51732-008... NOTE: 3	D C B A		PA	PA	PA	PA	PA	PA	PA	PA	PA	PA	PA	PA	PA	PA	H	H	H	H	H	H	H	H	G	G	G	G	G	G	G	F	F	F	F	F	F	F	F	R	R	R	R	R	R	R	R	E	E	E	E	E	E	E	E



CODE	DIM "M" MATING LENGTH	CONTACT TYPE
E	[5.59]	SIGNAL
F	[5.59]	SIGNAL
G	[5.59]	SIGNAL
H	[5.59]	SIGNAL
R	[6.86]	SIGNAL
PA	[N/A]	POWER

mat'l code				SEE NOTE		tolerances unless otherwise specified		CUSTOMER		FCI	
ltr	ecn no.	dr	date	linear	0.X ± 0.5	projection		COPY		www.fciconnect.com	
A	V12166	JRW	08/27/01		0.XX ± 0.25	MIM		title		14P + 28S	
B	V21294	TAB	09/11/02	angles	0.XXX ± 0.10	MIM		product family		PwrBlade	
C	DG05-0240	GuoJM	07/25/05	dr	0° ± 2°	MIM		size		213	
D	DG05-0435	SW	11/03/05	enr		MIM		dwg no		51732-008	
E	DG07-0498	JW	09/15/08	chr		MIM		scale		1 of 4	
				appd		MIM		A		1 of 4	
sheet index		revision sheet		E	E	E	E	scale		1 of 4	
				1	2	3	4	1:1			

cage code 22526

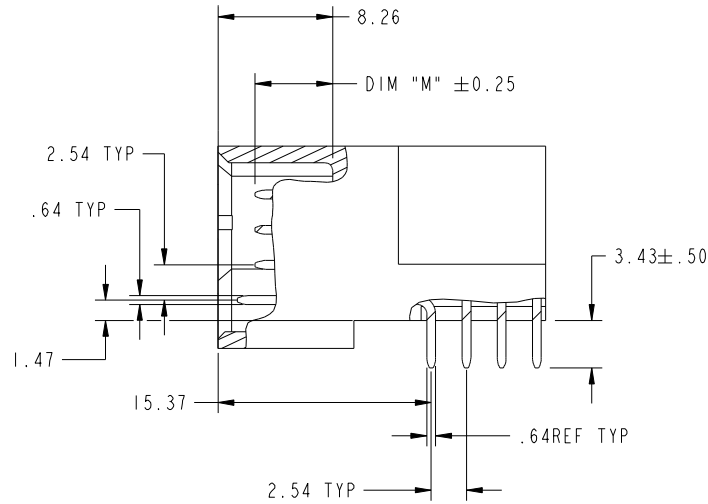
Pro/E

Tous droits strictement reserves. Reproduction ou communication a des tiers interdite sous quelque forme que ce soit sans autorisation écrite du propriétaire. Propriete de c FCI. Droits de reproduction FCI.

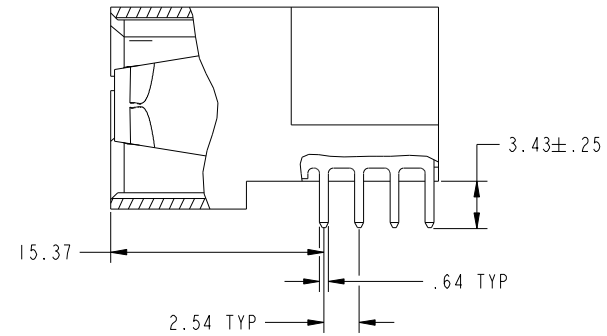


All rights strictly reserved. Reproduction or issue to third parties in any form whatever is not permitted without written authority from the proprietor. Property of FCI. Copyright FCI.

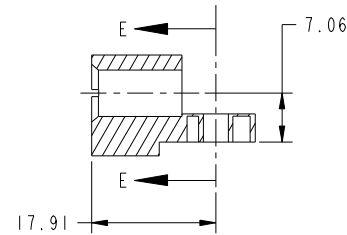
PRODUCT NUMBER
51732-008_-
NOTE: 3



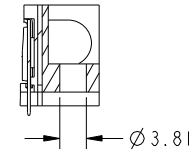
BROKEN-OUT SECTION A-A
SCALE 2:1



BROKEN-OUT SECTION B-B
SCALE 2:1



SECTION C-C



PARTIAL SECTION E-E

mat'l code		SEE NOTE		tolerances unless otherwise specified		CUSTOMER		FCI		www.fciconnect.com	
ltr	ecr no.	dr	date	linear	0.X ±0.5	COPY		title		14P + 28S	
E					0.XX ±0.25	projection		RIGHT ANGLE STB HEADER			
				angles	0.XXX ±0.10			product family		PwrBlade	
				dr	0° ±2°			size		213	
				enrg	T. BRUNGARD 09/10/02			dwg no		51732-008	
				chr	M. MOSTOLLER 09/10/02	scale		sheet		2	
				appd	M. MOSTOLLER 09/10/02	1:1		cage code		22526	
sheet index	revision sheet										

Pro/E

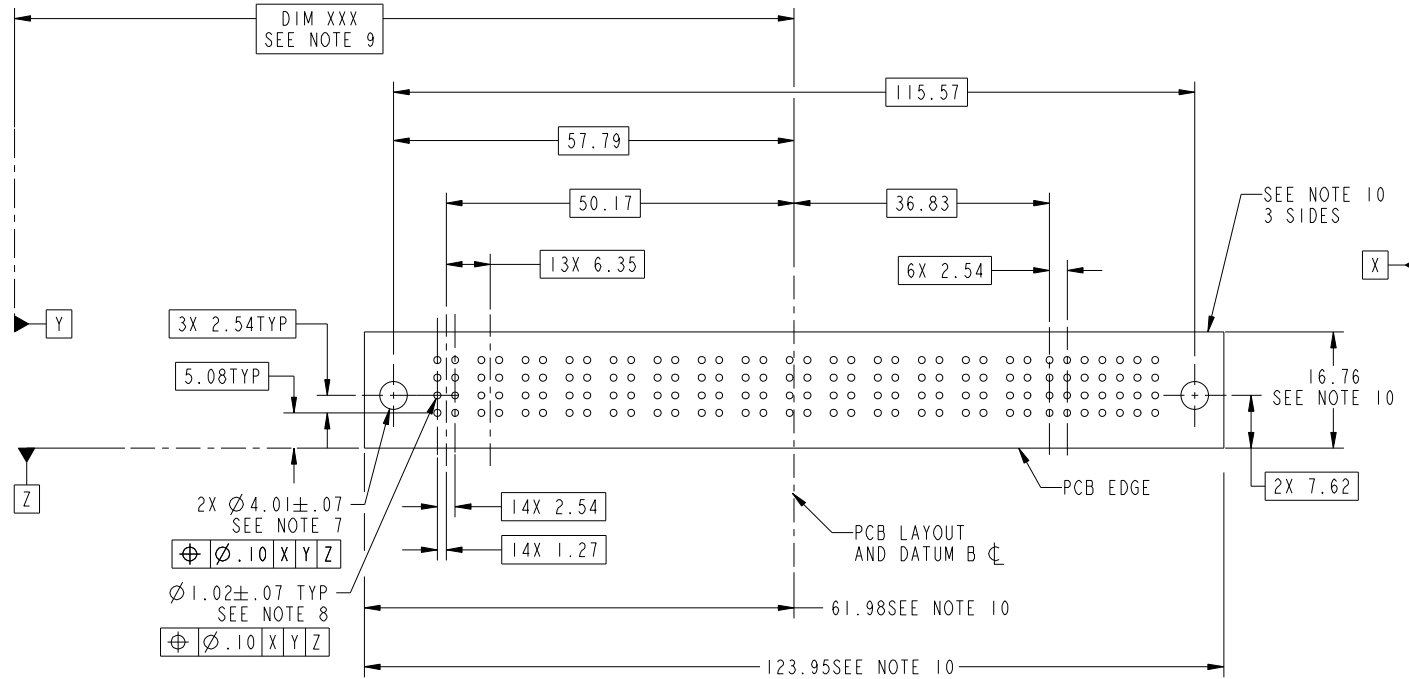
cage code 22526

Tous droits strictement reserves. Reproduction ou communication a des tiers interdite sous quelque forme que ce soit sans autorisation ecrite du proprietaire. Propriete de c FCI. Droits de reproduction FCI.



All rights strictly reserved. Reproduction or issue to third parties in any form whatever is not permitted without written authority from the proprietor. Property of FCI. Copyright FCI.

PRODUCT NUMBER
51732-008_-
NOTE: 3



RECOMMENDED PCB LAYOUT

mat'l code		SEE NOTE		tolerances unless otherwise specified		CUSTOMER		 www.fciconnect.com	
ltr	ecn no.	dr	date	linear	0.X ± 0.5	COPY		title	
E					0.XX ± 0.25	projection		14P + 28S RIGHT ANGLE STB HEADER	
				angles	0.XXX ± 0.10			product family PwrBlade code	
				dr	0 ± 2°	MIM		213	
				engr	T. BRUNGARD 09/10/02	scale		size	
				chr	M. MOSTOLLER 09/10/02	1:1		dwg no	
				appd	M. MOSTOLLER 09/10/02	A		51732-008	
sheet index	revision sheet							sheet 3	

cage code 22526

Pro/E

Tous droits strictement reserves. Reproduction ou communication a des tiers interdite sous quelque forme que ce soit sans autorisation écrite du propriétaire. Propriete de c FCI. Droits de reproduction FCI.



All rights strictly reserved. Reproduction or issue to third parties in any form whatever is not permitted without written authority from the proprietor. Property of FCI. Copyright FCI.

PRODUCT NUMBER
51732-008_-
NOTE: 3

NOTES:

1. DIMENSIONS AND TOLERANCES ARE IN ACCORDANCE WITH ASME Y14.5M, 1994 UNLESS OTHERWISE SPECIFIED.

CONNECTOR NOTES:

2. HOUSING MATERIAL: UL 94 V-0 GLASS FILLED HIGH-TEMP THERMOPLASTIC
POWER CONTACT MATERIAL: COPPER ALLOY
SIGNAL PIN MATERIAL: COPPER ALLOY

3. PLATING:
SEE ITEM 1 & 2 IN PRINT 10064183 FOR PLATING SPEC OF 51732-008; &model_name: SUPP_51558-001LF PRESPECTIVELY

4. MANUFACTURER'S NAME, P/N, AND DATE CODE TO APPEAR ON THIS SURFACE.

5. PRODUCT SPECIFICATION GS-12-149.
APPLICATION SPECIFICATION BUS-20-067.

PCB NOTES:

6. ALL HOLE DIAMETERS ARE FINISHED HOLE SIZE.
7. MOUNTING HOLES, WHERE APPLICABLE, ARE UNPLATED.

8. $\varnothing 1.151 \pm 0.025$ DRILLED HOLES PLATED WITH 0.008 MIN SnPb OR Sn OVER 0.03 TO 0.08 Cu PLATING TO ACHIEVE $\varnothing 1.02 \pm 0.07$ HOLE.

9. "DIM XXX" TO BE DETERMINED BY THE CUSTOMER.

10. CONNECTOR KEEP-OUT ZONE.

11. A \triangle SYMBOL WILL BE NEXT TO ANY DIMENSION, VIEW, OR NOTE WHICH HAS BEEN MODIFIED WITH THE CURRENT DRAWING REVISION.

mat'l code				SEE NOTE		tolerances unless otherwise specified		CUSTOMER		www.fciconnect.com	
ltr	ecn no.	dr	date	linear	0.X ± 0.5		COPY		projection	title	
E					0.XX ± 0.25					14P + 28S	
					0.XXX ± 0.10					RIGHT ANGLE STB HEADER	
				angles	0° + 2°		scale		product family		
				dr	T. BRUNGARD	09/10/02	1:1		PwrBlade		
				enrg	M. MOSTOLLER	09/10/02	A		code		
				chr	M. MOSTOLLER	09/10/02			size		
				appd	M. MOSTOLLER	09/10/02			dwg no		
sheet index		revision sheet								213	
										sheet 4	

cage code 22526

Pro/E